

A DIVISION OF ESI EQUIPMENT, INC

**JYD**  
**JUNKYARD DOG**  
**industries**

**PRODUCT CATALOG**

2023.JYD.VER.1





## **ABOUT JUNKYARD DOG INDUSTRIES™ (JYD INDUSTRIES)**

Innovations and dedication have made ESI Equipment, Inc., the parent company of Junkyard Dog Industries™ (JYD Industries) and the home of ESI Equipment Apparatus Division, a preferred and proven industry source. With multiple divisions, enthusiastic personnel, and vast product lines, ESI Equipment is proud to be your rescue resource.

With extrication equipment designed with resolve for today's first responders, Junkyard Dog Industries™ continues to bring uncommonly straight forward game changing solutions to modern challenges.

Starting with our famous line of Junkyard Dog Rescue Struts 15+ years ago, today, Junkyard Dog Industries™, a division of ESI Equipment, Inc., specializes in vehicle stabilization, lifting, rescuer safety, and patient protection products. Junkyard Dog Industries is proud to be arming the emergency response community with simple, portable, lightweight, and proven first-in equipment.

Accessible nationwide through a large Dealer Network, explore what thousands of responders have discovered about JYD's forward-thinking product designs, high standard materials, and commitment to equipping responders with straightforward solutions to modern challenges with ease and confidence.

Junkyard Dog Industries™, also known as JYD Industries, is a division of ESI Equipment, Inc. JYD/ESI is a member of FEMSA and contributes to the Fallen Firefighters Foundation, FOOLS chapters, and Burn Foundation activities.

**[www.JYDIND.com](http://www.JYDIND.com) // 1-800-574-8228 // [INFO@JYDIND.com](mailto:INFO@JYDIND.com)**

**Visit us online to find a authorized Junkyard Dog (JYD)  
Industries Distributor/Dealer near you**

# TABLE OF CONTENTS

<b>4</b>	RESCUE STRUTS
<b>12</b>	SIDEWINDER JACK
<b>14</b>	STABILIZATION KITS
<b>15</b>	STABILIZATION ACCESSORIES
<b>16</b>	CRIBBING
<b>18</b>	MOUNTING BRACKETS
<b>19</b>	VEHICLE CATCH CUSHION
<b>20</b>	CHAINS & HOISTS
<b>28</b>	RESPONDER GEAR BAGS
<b>32</b>	1ST IN ESSENTIALS <small>NEW X-THE-BLEED TRAUMA KIT (37)</small>
<b>41</b>	HAND TOOLS



A DIVISION OF ESI EQUIPMENT, INC

**JYD**  
**JUNKYARD DOG**  
**industries**

**FORGET CUMBERSOME,  
COMPLICATED, CRIBBING.**  
JUNKYARD DOG INDUSTRIES  
RESCUE STRUTS HAVE PROVEN,  
OVER AND OVER, THAT IN  
VEHICLE-RESCUE SITUATIONS  
WHEN TIME IS CRITICAL, LESS  
EQUIPMENT DEFINITELY DOES  
DO MORE.





# JUNKYARD DOG RESCUE STRUTS

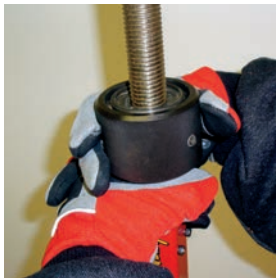
For more than 15 years, Junkyard Dog Rescue Struts have proven to be an essential 1st-in stabilization tool for thousands of departments and are trusted by a network of Distributors spanning across North America.

**BETTER VEHICLE STABILIZATION THAT LEADS TO SAFER OPERATIONS IS WHAT THE JUNKYARD DOG RESCUE STRUT FAMILY IS ALL ABOUT.**

These simple, self-contained, lightweight rescue struts work on the "tension buttress" principal for quick and secure deployment when you need it most. Junkyard Dog Rescue Struts are lightweight, ranging from 19 lbs. to 32 lbs., and come in two styles, each available in a variety of sizes to accommodate your department's needs.

**SAFE, EFFECTIVE, AND EFFICIENT STABILIZATION FOR TODAY'S MVC.**

## WHAT'S THE DIFFERENCE IN JUNKYARD RESCUE STRUT STYLES?



### **THE ZSTRUT STYLE**

The ZSTRUT Style Rescue Struts deployment method replaces the pin-placement system with a proprietary quick-locking collar that makes it easier than ever. The ZSTRUT is extended like this: Simply pull up on the head and the threaded rod "zips" out of the square tube. When you stop pulling, it automatically locks in place. If you require incremental adjustments in height and/or tension, simply rotate the collar, and the threaded rod moves accordingly. To retract the extension, just pull up on the collar, the threaded rod is released and can be dropped back into the outer tube.

### **THE XTEND STYLE**

The XTEND Style Rescue Struts deployment method is just as simple but uses the known pin-placement system. The XTEND Style strut uses heavy-duty, quality, stainless-steel aircraft quality Locking Adjustment "T" Pins for quick and secure deployment.





**SELF  
CONTAINED**

With Junkyard Dog Rescue Struts, your department gets a completely self-contained strut that gives your crew a vehicle stabilization system that's easier to deploy for safer, more effective, and more efficient vehicle stabilization with fewer personnel. All components fit into its accessory bag attached directly to the strut, ensuring that a rescuer has everything they need to deploy the strut without returning to the fire apparatus. After deployment, the accessory bag is a repository for excess ratchet straps to eliminate any tripping or entanglement hazard.



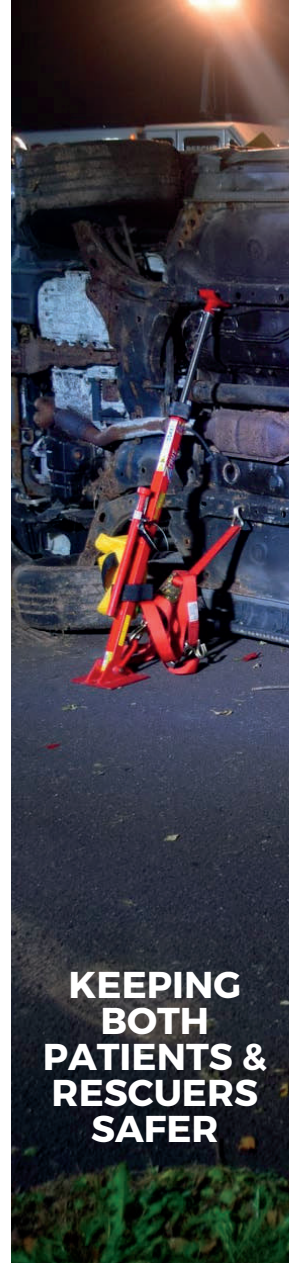
**COMPACT &  
PORTABLE**

Portable, compact, and self-contained, easily store your struts anywhere for rapid deployment. The base plate can pivot 180 degrees while the built-in attachment ring, or clevis, folds flat for more accessible storage. The accessory bag is intentionally sized to conform with the base plate, not to extend further, making compartment-mounting simple. PAC mounts made specifically for Junkyard Dog Struts are part of the Junkyard Dog product line and available from all authorized distributors.



**MADE IN  
THE USA**

Junkyard Dog Rescue Struts are quality, American-made products. All included straps are Berry Compliant, 100% made in the USA, and made with strength and vigor in mind for some of the most formidable military applications. Junkyard Dog Rescue Strut's new straps are engineered with enhanced durability to keep a strong, tight grip over the load with maximum wear resistance, helping to make the securement job easier—all while meeting and exceeding several additional industry standards. Each Strap has a 1300 lb. (WLL) (3335 lb. WLL for Heavy Duty Strut) with a 3:1 safety factor.



**KEEPING  
BOTH  
PATIENTS &  
RESCUERS  
SAFER**

You don't have to worry about your crew's ability to stabilize the vehicle, regardless of its orientation, when your department invests in Junkyard Dog Rescue Struts. Using Junkyard Dog Rescue Struts as tensioned buttresses results in a wider vehicle "footprint" that decreases the likelihood of the vehicle tipping over during the extrication keeping both patients and rescuers safer.



**FEWER  
FIREFIGHTERS  
NECESSARY  
TO DEPLOY**

Lightweight, independent, and with no complicated assembly, Junkyard Dog Rescue Struts are mission-built to allow even a single rescuer to stabilize a vehicle faster, better, and often far more easily than a team of rescuers with a truck full of cribbing and connectors. This leaves remaining rescuers available to engage in other critical vehicle extrication tasks (e.g., hazard control, deployment, and operation of rescue tools, and providing patient care).



# FEATURES & BENEFITS



## A BETTER WAY TO STABILIZE MODERN VEHICLE

In their pursuit of lighter, more aerodynamic automobiles, engineers began creating vehicles with more rounded body styles. Additionally, production technology and material advances have resulted in a vehicle that acts like a spring when it rolls or bounces. The best way to stabilize such a car is with tensioned buttresses. A buttress is simply a column (in this case, a strut) tipped over with its top anchored to the vehicle. Next, a tensioning device (ratchet strap) is used to pull the base of the strut towards the car, thereby applying an even force to the car in both a sideways and upward direction. Using struts as tensioned buttresses results in a broader vehicle "footprint" that decreases the likelihood of the car tipping over during the extrication keeping both patients and rescuers safer.



## RATED TO DEPLOY WITH CONFIDENCE

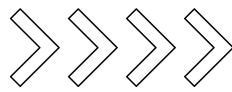
Rescuers can confidently deploy Junkyard Dog Rescue Struts, knowing that the struts have a safe working load limit of up to 5000 lbs. with a 2:1 safety factor (results of testing conducted by an independent third-party). The Heavy Duty Strut is rated at over 10,000 lbs. with a 2:1 safety factor at full extension



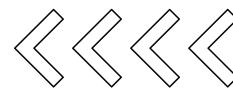
## SIMPLE

Junkyard Dog Rescue Struts are intentionally engineered to be simple. Simple to store. Simple in design. Simple to train and Simple to deploy with no complicated assembly. It only takes one rescuer to carry two JYD Rescue struts, and a single rescuer can easily apply one strut. Junkyard Dog Rescue struts have proven, over and over, that in a vehicle rescue situation when time is critical, less equipment does do more.





# COMPONENTS



## INTERCHANGABLE HEADS

Every Strut includes two removable heads: the Angled Head for inserting and gripping in angle positions up to 90 degrees and the Pointed Head for placing in available holes or created holes in sheet metal.

## ANCHOR PICKET

The included Anchor Picket is attached to the strut using stainless steel locking pins to allow for quick deployment when applicable. The Anchor Picket can be removed and used to further stabilize the base when conditions are warranted, in the intentionally designed hole located in the base plate for securing the strut system on soft ground or off-setting side loading. The picket head is coated with a durable polymer coating.

## CARRYING HANDLE

The Strut Carrying Handle is specifically engineered to carry the strut in a balanced position allowing for two struts to easily be carried by one individual. The handle is welded to the base of the strut, with the removable anchor picket built in and holding the accessory bag.

## ACCESSORY BAG

Made of Vinyl coated polyester, the accessory bag is secured to the strut handle using Velcro and is included with every strut. It carries all accessories when not in use and is intentionally sized to conform with the base plate, not to extend further, making compartment-mounting simple.

## RATCHET STRAP

Berry compliant, made in the USA, the Ratchet Strap is used to latch onto a component of the vehicle onto the Axle Strap or Floating Claw Hook and draws in the base gripping the ground and the vehicle maintaining tension and completing the support. The Ratchet Strap has a 1,300 lb. working load and a 4,000 lb. breaking strength. \*floating claw hook attached\*

## FLOATING CLAW HOOK

The Floating Claw Hook can be used as a fastening point for the ratchet strap by placing it into an existing hole in the frame, around a structural component of the car, or by creating a hole in the metal structure by use of a step-bit. The ratchet strap can be doubled back for added strength.

## AXLE STRAP

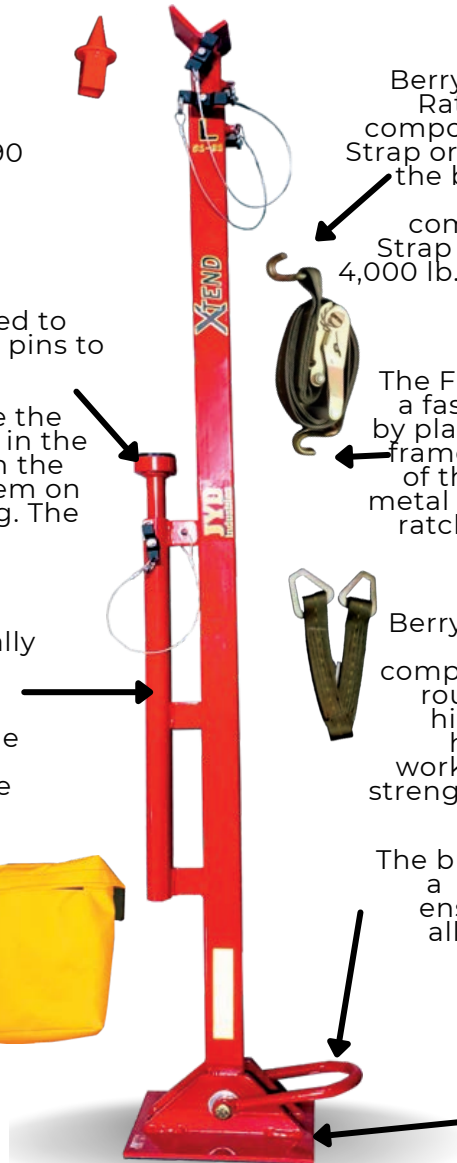
Berry compliant, made in the USA, the axle strap is used to lash onto a component of the vehicle with a single round turn, multiple wraps, a "girth" hitch or by using the attached claw hook. The axle strap has a 1,300 lb. working load and a 4,000 lb. breaking strength. \*Floating claw hook attached\*

## CLEVIS

The built-in attachment ring swivels on a grade 8 bolt with a locking nut to ensure contact with the ground and allows the pass-through of multiple strap hooks. Folds flat for easier storage.

## BASE PLATE

The body of the strut is mounted on a base plate capable of pivoting 180 degrees for proper positioning and convenient storage.



PRODUCT	Retracted Length	Maximum Extension	Weight	WLL	Safety Factor	WLL Ranges	Includes
<b>XTEND</b> XTEND - Small	27 inches	42 inches	19 lbs.	5,000 lbs.	2:1	FULL EXTENSION	Accessory Bag, Ratchet strap with floating claw hook, Axle strap with floating claw hook, Angled head, Witches hat head and Picket included with each strut The Heavy Duty Strut comes with a larger accessory bag containing all accessories.
XTEND - Medium	39 inches	64 inches	24 lbs.	5,000 lbs.	2:1	MID EXTENSION	
XTEND - Large	51 inches	81 inches	27 lbs.	5,000 lbs.	2:1	MID EXTENSION	
XTEND - HD	51 inches	81 inches	37 lbs.	10,000 lbs.	2:1	FULL EXTENSION	
<b>ZSTRUT</b> ZSTRUT - Small	27 inches	42 inches	24 lbs.	5,000 lbs.	2:1	FULL EXTENSION	
ZSTRUT - Medium	39 inches	64 inches	29 lbs.	5,000 lbs.	2:1	MID EXTENSION	
ZSTRUT - Large	51 inches	81 inches	32 lbs.	5,000 lbs.	2:1	MID EXTENSION	
Kinedyne Ratchet Strap	N/A	10 feet	-	1,300 lbs.	3:1	-	Floating Claw Hook
Kinedyne Axle Strap	N/A	2 feet	-	1,300 lbs.	3:1	-	
Kinedyne Ratchet Strap *Heavy Duty*	N/A	10 feet	-	3,330 lbs.	3:1	-	
Kinedyne Axle Strap *Heavy Duty*	N/A	2 feet	-	3,330 lbs.	3:1	-	











# SETS VS SYSTEMS

## RESCUE STRUT SETS

All Junkyard Dog Rescue Struts are sold as a set of two. All Strut sets come with X2 Struts, X2 Point Heads, X2 Angled Heads, X2 Accessories Pouches, X2 pickets, X2 Ratchet Straps with floating claw hooks, and X2 Axle Straps with floating claw hooks.

Rescue Strut Sets: SMALL  
XTEND Part #: JYD-XRS S  
ZSTRUT Part #: JYD-ZRS S

Rescue Strut Set: MEDIUM  
XTEND Part #: JYD-XRS M  
ZSTRUT Part #: JYD-ZRS M

Rescue Strut Set: LARGE  
XTEND Part #: JYD-XRS L  
ZSTRUT Part #: JYD-ZRS L

XTEND HD Heavy Duty Strut Set  
Part #: JYD-XHD L



## RESCUE STRUT SYSTEMS

All Junkyard Dog Rescue Strut Systems consist of a combination of two sets in the size of your choice (x4 total struts).

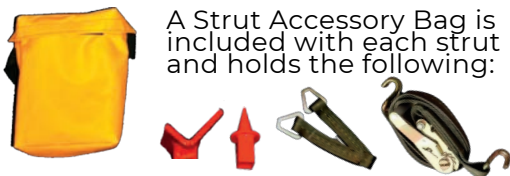
SMALL + LARGE SYSTEM:  
*Includes (x2) SM & (x2) LG*  
ZSTRUT Part#: JYD-ZRS SYS  
XTEND Part#: JYD-XRS SYS

SMALL + MEDIUM SYSTEM  
*Includes (x2) SM & (x2) MD*  
ZSTRUT Part#: JYD-ZRS SMMD  
XTEND Part#: JYD-XRS SMMD

MEDIUM + LARGE SYSTEM  
*Includes (x2) M & (x2) LG*  
ZSTRUT Part#: JYD-ZRS MDLG  
XTEND Part#: JYD-XRS MDLG



### STANDARD STRUT ACCESSORY BAG



A Strut Accessory Bag is included with each strut and holds the following:

### HEAVY DUTY STRUT SET ACCESSORY BAG



Heavy Duty Strut Accessories for both struts included in a set are all located in a single, easy to carry shoulder Bag included with your purchase.





# SIDEWINDER JACK KIT

JYD-SW-K

The Sidewinder Jack is designed for rescue operations to either stabilize or lift an intended load. A choice of heads provides a choice of smooth or aggressive action against the load. The pivot head provides better surface contact on angled loads. The smooth operating drive train provides ease of operation - manually or by a powered impact tool. In operation, the Sidewinder Jacks increase in strength as it is extended. Weighing just 19 pounds, each Sidewinder Jacks provides eight inches (22 cm) of lift, enough space for safe and effective patient removal. Third-party Tested at over 15,000 lbs., rated for a 7,500-pound working load limit, the Sidewinder Jack can be powered by a hand-operated Speedy Wrench (included) or Impact gun.

## SIDEWINDER JACK KIT INCLUDES:

**(1) Sidewinder Jack    (1) Speedy Wrench    (1) Universal    (1) Combination Flat Head and Pointed Head**

ENGINEERED SCISSOR OPERATION  
SPECIFICALLY DESIGNED FOR RESCUE WORK

PIVOTING HEAD  
CAN ADJUST TO  
SLOPING ANGLES  
FOR QUICK ACTION

CAN BE OPERATED  
MANUALLY OR WITH  
POWER TOOLS

ROLLER BEARINGS  
FOR SMOOTHER  
OPERATION

POLYMER  
COATED BOTTOM  
DESIGNED WITH  
WIDE BASE FOR  
STABILITY



SINGLE HEAD DESIGN  
FOR QUICKER,  
OPERATION

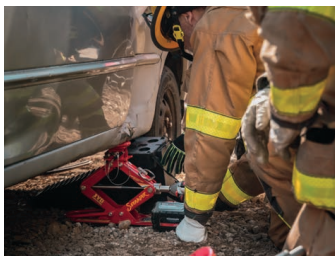
PIVOTING CARRY-  
HANDLE FOR EASY  
PORTABILITY

ENCLOSED  
THREADED ROD

BUILT IN CLEVIS  
DESIGNED  
SPECIFICALLY TO  
SECURE A RATCHET  
STRAP

FORCE LABEL AND CHART FOR  
CALCULATING LOAD LIMITS

## STABILIZING AND LIFTING SCENARIOS:



### ALL FOURS

The Sidewinder can be used for quick 2 or 4 point stabilization. The Sidewinder eliminates the need to deflate the tires by releasing the weight on the suspension. This accomplishes a partial or total lift with ease.



### SIDE ROLLOVER

When used in conjunction with other stabilization devices, the Sidewinder's pivoting heads can adjust to sloping angles for quick action. Tethered to a strut, a vehicle can be lifted using the Sidewinder.



### ROOF ROLLOVER

Using the Sidewinder in a pair under the roof rail, allows for efficient stabilization. Lifting the rear upward becomes faster and more effective. Placing the sidewinder under the A-Post/Hood area allows you to lift the front end.



### OTHER APPLICATIONS

The Sidewinder is primarily designed for automobile use. Other applications exist, such as in rescue operations including USAR and special operations.



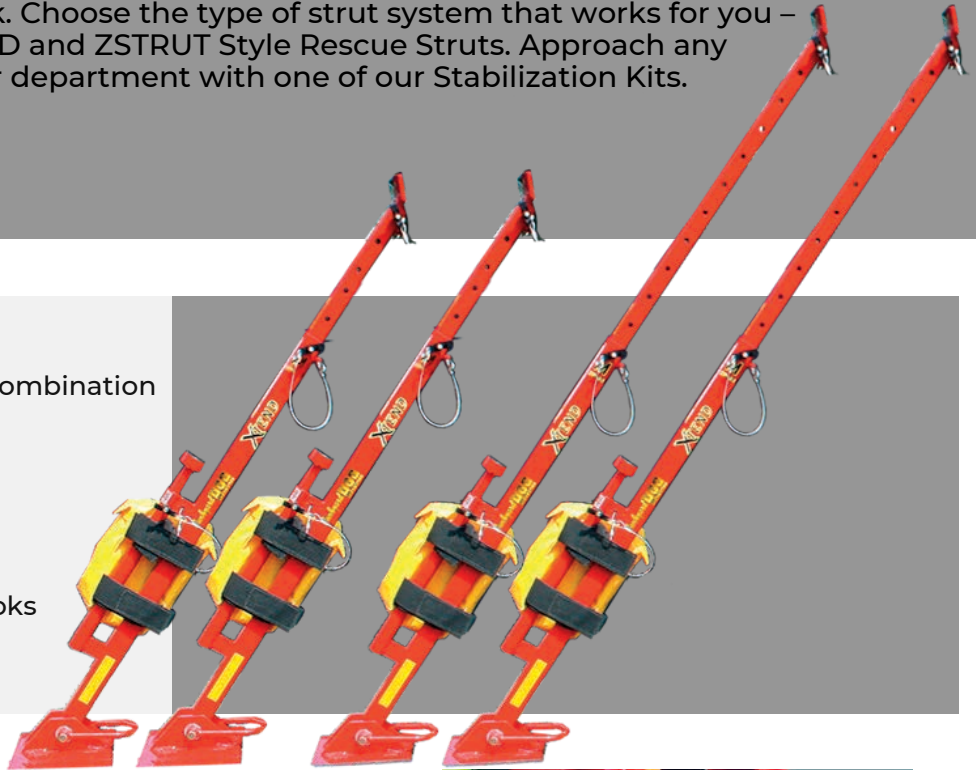
# RESCUE STRUT STABILIZATION KITS

Everything you need for conventional and unconventional stabilization needs, all in one convenient kit. Do a quick 2- or 4-point stabilization with the included Sidewinder Jacks and accomplish a partial or total lift with ease, or add the Struts in conjunction with the Sidewinder to stabilize and lift in a rollover scenario. The Cleat Base guarantees your Struts and Sidewinder grip on off-road/uncertain surfaces when you need it. The included Milwaukee Kit consists of intentionally selected M18 powered tools and components such as a drill bit to create purchase points and an impact wrench as an alternative method of deployment for the Sidewinder Jack. Choose the type of strut system that works for you – systems are available for both XTEND and ZSTRUT Style Rescue Struts. Approach any scenario confidently by arming your department with one of our Stabilization Kits.

## KIT #1

### (2) ZSTRUT or XTEND Strut System

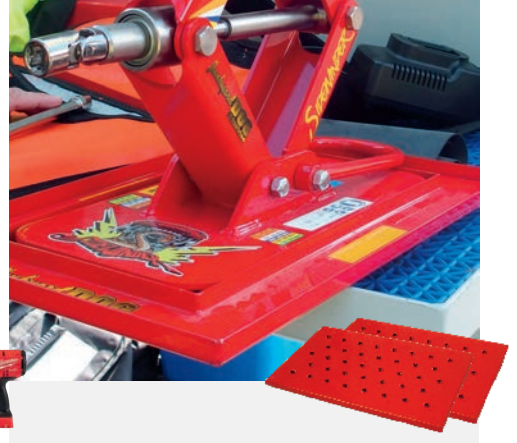
- (4) Rescue Struts—Choose any size combination
- (4) Witches Hat (Pointed Heads)
- (4) 90 Degree Heads
- (4) Accessory Pouches
- (4) Pickets
- (4) Ratchet Straps with floating J hooks
- (4) Axle Straps with floating J hooks



**(2) SIDEWINDER JACK KITS**  
More on page 13



**(1) MILWAUKEE DRILL KIT #2**  
More on page 42



**(2) CLEAT BASES**  
More on page 15

## KIT #2

Upgrade to KIT #2 and get x4 Sidewinder Jack Kits!

- (2) ZSTRUT OR XTEND STRUT SYSTEM
- (4) SIDEWINDER JACK KITS

- (1) MILWAUKEE DRILL KIT #2
- (2) CLEAT BASES

ZSTRUT Stabilizing Kit #1 (Part #: JYD-ZSTAB-K1)  
XTEND Stabilizing Kit #1 (Part #: JYD-XSTAB-K1)  
ZSTRUT Stabilizing Kit #2 (Part #: JYD-ZSTAB-K2)  
XTEND Stabilizing Kit #2 (Part #: JYD-XSTAB-K2)



# STABILIZATION ACCESSORIES

## MINI-PULLER KIT

**JYD-MP-K**

Originally designed for foot entrapment by pedals, The Mini Puller Kit features a ½ Ton Come Along with a compact, lightweight carbon steel design and accompanying accessory chains. The kit Includes:

### (1) Mini Lever Puller

- 1/2 Ton Come Along (1,000 lbs.)
- Compact, Lightweight Carbon Steel Design
- Non-Slip Rubber Handle
- High output, Short Handle for Tight Spaces
- 5 ft., Grade 100, Nickel Plated Load Chain
- Free Chain Mechanism
- Load Chain Guide for Smooth Operation
- Both Hooks Have Notched Safety Latches
- Meets ASME b30, Every Hoist is Tested to 125% of Rated Capacity

### (1) Accessory Chain

- 5' x 9/32" Grade 100 Adjustable Anchor Chain
- Tagged and Certified

### (1) Labeled Carrying Bag



## DOGGIE BAG

**JYD-475**

Equip yourself with 9 different attachment devices all readily available in one durable stabilization accessory shoulder bag with JYD Industries' Doggie Bag. The uniquely engineered Doggie Bag is designed as an economical solution for responders to conveniently carry specifically selected components to assist during stabilization operations, as well as to work seamlessly with our Rescue Struts.

The Doggie Bag Accessory Kit Includes:

- (2) Ratchet Straps with 20' of Webbing (Blue)
- (2) Axle Straps (Blue)
- (2) Open Hook Straps (Blue)
- (2) Cluster Hooks
- (1) C-Hook on Webbing



## R.I.T. Lift Kit

**ESI-RKBK**

Self-contained and easily deployed, Junkyard Dog Industries' RIT Lift Kit keeps you organized during rapid intervention situations. When time is of the essence, have everything you need in one kit, ready to go. Simply, place the bags where they need to go, turn on the bottle and start to lift.

- (2) SavaTech Ten-Ton Lifting Bags
- (1) Small Compressed Air Cylinder
- (1) Pre-Set Regulator
- (1) 20' Controller Supply Line
- (2) 20' Bag Supply Lines with Relief Valve and Shut-Off Valve
- (1) Dual Controller with Gauges & Relief Valve
- (1) Custom Carry Bag that Secures Cylinder with Handles & Carry Strap



## 1" Headed Pickets

**JYD-20068**

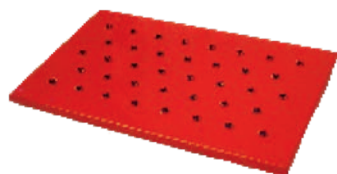
- Powder Coated Red Cold Rolled Steel
- Head with Rhino Coating
- Formed Point
- Designed to Meet Rescue Certifications
- 36" Length
- 1" Diameter
- Reflective Bands



## CLEAT BASE

**JYD-CLBS**

- Strut & Sidewinder Accessory
- Designed for Off-Road or Slippery Conditions
- Stainless Steel with Welded Inner Guide
- 14" x 7" Doubles footprint of SideWinder Base
- Strut Base Slides in Guides for Proper Tensioning
- Stamped Bottom Cleats for Use on Ice or Slippery Roads
- Powder Coated Red for Durability and Visibility





A DIVISION OF ESI EQUIPMENT, INC.

**JYD**  
**JUNKYARD DOG**  
**industries**

**CRIBBING**



## SIDEWINDER STEP CHOCK KIT

Part #: JYD-SWSTAB-K1



The Sidewinder Step Chock Kit is your simple solution to stabilize and lift more efficiently in a variety of scenarios with less equipment and more confidence.

### Step Chocks

Safer and more effective than old fashion wood cribbing, Turtle Plastics Step Chocks saves critical set-up time. Lighter than wood-based cribbing, each cribbing piece includes a rope handle for easy carrying or removal. Grab and position these step chocks quickly and meet the "golden hour rule" when your victim is in need.

### Sidewinder Jacks

Two sidewinders use the space of roughly two 4x4s but replace 16 4x4s. For an engine rescue, a pumper rescue, or anything that you have space restraints, Junkyard Dog Industries Sidewinders make every bit of sense over piles and piles of wood cribbing.

#### KIT INCLUDES:

- (2) Turtle Plastics Step Chocks (SC-1)
- (2) Complete Sidewinder Kits ( JYD-SW-K)

**We always try to make sure we have enough cribbing, but what is enough? We made it simple and easy to organize and deploy your cribbing with the popular Junkyard Dog Cribbing Kits.**

The Cribbing Bag can hold up to (9) 4" x 4" pieces of Turtle Plastic Cribbing. Cribbing Kit #1 has various Pyramid Locking Lincoln Logs and Plastic Wedges, while Kit #2 offers a wider variety of sizes. Equipped with reinforced handles, your cribbing is all kept together and ready to carry off your rig in JYD's three-sided Cribbing Bag intentionally designed to grant quick access to cribbing pieces and keep them secure during transport.

#### CRIBBING KIT #1 Includes:

JYD-CRB-K1

- (8) 4X4X18 Pyramid Cribbing
- (4) 2"x4"x12" Wedges
- (1) JYD Cribbing Bag

#### CRIBBING KIT #2 INCLUDES:

JYD-CRB-K2

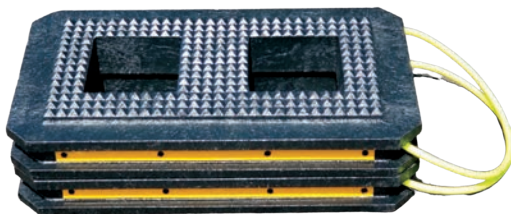
- (6) 4X4X18" Pyramid Cribbing
- (4) 2X4X18" Pyramid Cribbing
- (4) 2X4X18 Pyramid Face Wedge
- (1) JYD Cribbing Bag

## CRIBBING BAG KIT



## DOG PAW CRIBBING BLOCKS

Part #: JYD-DP



**Dog Paw Cribbing Blocks are stackable, mission built, cribbing, made by Turtle Plastics, designed to use with Junkyard Dog Rescue Struts and Sidewinder Jack**

#### Features:

- Works with both the JYD Struts and Sidewinder
- Interlocks on each other to be stacked together
- Pyramid textured bottom designed to work with the Turtle Plastics pyramid cribbing
- Front and back cut-outs, works with a 3.5" Wedge
- Also works with the cleat base
- Can be used to raise the Sidewinder and Strut height for use on SUVs or Pickups

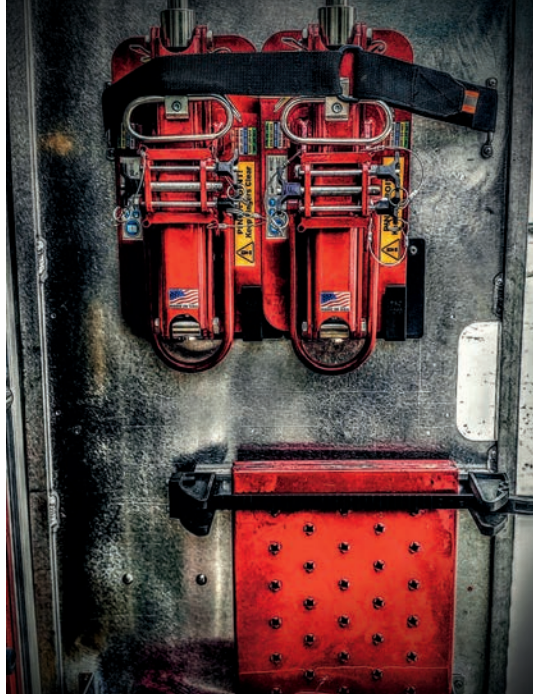




# PAC TOOL MOUNTS



Mounts in Multiple Positions in various locations including Compartment Walls, Trays, and Dividers, or PAC TRAC Systems.



## Junkyard Dog Rescue Strut & Sidewinder Mounting Systems



### SIDEWINDER MOUNTS

Vertical Mount Part #: JYD-SW VMK

Horizontal Mount Part #: JYD-SW HMK

### STRUT MOUNTING KIT

Part #: JYD-1090K

Includes: PAC, Handlelok, JYD Base Holder





# VEHICLE CATCH CUSHION

## Make a complicated extrication, simple.

For an injured patient, removal procedures are less likely to cause further injury. Lowering the vehicle into a position that is easily recognizable and easily dealt with in the crucial time of extrication. Dramatically reduce extrication time with Junkyard Dog Industries Catch Cushion.

## Safely lower an occupied vehicle to better access patients on scene with Junkyard Dog Industries Vehicle Catch Cushion

Every Vehicle Catch Cushion comes with all the accessories necessary during rescue operations.

- Vehicle Catch Cushion Package weighs 44 lbs.
- Stainless steel D-rings for anchoring
- 2 cam-lock fill & discharge ports with caps
- 10' discharge hose with adjustable deflation control
- Weight: 35 lbs.
- Material: 5 mil. TPU composite
- Dimensions: 60"L x 42.6"H x 20"W
- 2 CamLock G' Straps
- Battery Powered Blower
- Thermal Protection Blanket
- Carry Bag

**The mission-built Vehicle Catch Cushion for control descent of domestic cars and light truck**

JYD-VCC-PKG





A DIVISION OF ESI EQUIPMENT, INC.

**JYD**  
JUNKYARD DOG  
industries

# Chains & Hoists



# MISCELLANEOUS CHAINS

PART NUMBER	PRODCUT DESCRIPTION
ESI-20032	10' 3/8" Grade 100 with grab hook
JYD-20031	18 Feet 3/8" G-100 Chain w/Slip and Grab Hook
JYD-20040	28' 3/8" Grade 100 Chain with Grab Hooks
ESI-20052	5ft by 3/8" grade 100 chain w/Slip-Grab Hooks
ESI-20053	10ft by 3/8" grade 100 chain w/Slip-Grab Hooks
ESI-20021	5 FT x 9/32" Grade 100 Accessory Chain w/Slip-Grab Hooks
ESI-20022	10 FT x 9/32" Grade 100 Accessory Chain w/Slip-Grab Hooks
JYD-20047	5FTx 3/8" Chain w/ Grab Hooks
JYD - 20035 G70	J-Hook 6FT X 5/16" G-70 Chain w/Grab Hook WLL 6,600lbs.
JYD - 20035 G80	J-Hook 6FT X 5/16" G-80 Chain w/Grab Hook WLL 6,600lbs.
JYD-20039	J-Hook w/10' Chain & cluster hook
JYD-20041	J-Hook 6FT C 3/8" G-70 Chain w/Grab & Mini J
JYD-20036	C-Hook w/5 Feet 3/8" G-43 Chain w/Grab Hook
JYD-20037	3-Link Cheater 3/8" Chain G-100
JYD-20038	28" Cheater 3/8" Chain G-100
JYD-20046	32" Cheater 1/2" Chain G-100
JYD-20034	Cluster Hook Set





# LEVER HOISTS /COME-ALONGS PACKAGES

Portable, compact, and lightweight, the Lever Hoist is a portable hand-operated hoist with a ratchet used to pull objects and is easy to operate with simple controls. Use minimum effort to lift the maximum load. All our Lever Hoists are designed to be high-performing, extremely durable, and built to accomplish the toughest tasks. In line with the Junkyard Dog Industries mission, we have made it simple for you to choose a lever hoist package right for you. Choose from our Standard or Deluxe Hoists, add an Overload device for optimized safety, get it with accessory chains, and/or add a poly box for storage. Whichever option is right for you, our lever hoists are your lightweight chain solution for multi-directional pulling.

## STANDARD LEVER HOISTS

rugged, all steel , compact, perfect for day-to-day operations

### Standard 1.5 Ton (3,000lb) Lever Hoist 5ft Chain Package

Includes:

- 3000 lb. Lever Hoist (Part No. ESI-20005)
- Adjustable 5 ft. by 9/32" grade 100 chain
- Adjustable 10 ft. by 9/32" grade 100 chain

PART NO. ESI-20010

### Standard 1.5 Ton (3,000lb) Lever Hoist 5 ft. Chain Package with Poly Box

PART NO. ESI-20015

### Standard 3 Ton (6,000lb) Lever Hoist 5ft Chain Package

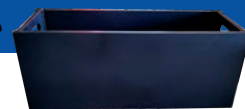
Includes:

- 6000 lb. Lever Hoist (Part No. ESI-20051)
- Adjustable 5 ft. by 3/8" grade 100 chain
- Adjustable 10 ft. by 3/8" grade 100 chain

PART NO. ESI-20015

### Standard 3 Ton (6,000lb) Lever Hoist 5 ft Chain Package with Poly Box

PART NO. ESI-20055



## DELUXE LEVER HOISTS

alloy steel, quality-built designed for reliable operations in the toughest conditions

### Standard 1.5 Ton (3,000lb) Lever Hoist 5ft Chain Package

Includes:

- 3000 lb. Lever Hoist (Part No. ESI-20005)
- Adjustable 5 ft. by 9/32" grade 100 chain
- Adjustable 10 ft. by 9/32" grade 100 chain

PART NO. ESI-20010

### Standard 1.5 Ton (3,000lb) Lever Hoist 5 ft. Chain Package with Poly Box

PART NO. ESI-20015

### Deluxe 3 Ton (6,000lb) Lever Hoist 5 ft. Chain Package

Includes:

- 6000 lb. Lever Hoist (Part No. TTP-19690)
- Adjustable 5 ft. by 3/8" grade 100 chain
- Adjustable 10 ft. by 3/8" grade 100 chain

PART NO. ESI-20057

### Deluxe 3 Ton (6,000lb) Lever Hoist Package with Poly Box

PART NO. ESI-20058

## DELUXE LEVER HOISTS WITH OVERLOAD DEVICE

optimized safety against unintentional release of load

### Deluxe 1.5 Ton (3,000lb) Lever Hoist 5 ft. Chain w/ Overload Device Package

Includes:

- 3000 lb. Lever Hoist (Part No. TTP-19680-OD-1)
- Adjustable 5 ft. by 9/32" grade 100 chain
- Adjustable 10 ft. by 9/32" grade 100 chain

PART NO. ESI-20011

### Deluxe 1.5 Ton (3,000lb) Lever Hoist w/ Overload Device Package with Poly Box

PART NO. ESI-20073

### Deluxe 3 Ton (6,000lb) Lever Hoist 5ft Chain w/ Overload Device Package

Includes:

- 6000 lb. Lever Hoist (Part No. TTP-19689-OD)
- Adjustable 5 ft. by 3/8" grade 100 chain
- Adjustable 10 ft. by 3/8" grade 100 chain

PART NO. ESI-20075

### Deluxe 3 Ton (6,000lb) Lever Hoist w/ Overload Device Package with Poly Box

PART NO. ESI-20073





#### ACCESSORY CHAINS







# GRIPHOISTS

KITS, AND ACCESSORIES

## What to know about Griphoists:

- The Griphoist is essentially a manual, portable winch that is also rated for man-lift operations, something a winch is not rated for
- Gives you complete control of lift and pull operations
- Capable of moving obstructions and stabilizing
- Easily and quickly set up
- Has the flexibility to be used vertically or horizontally
- Always ready to lift, pull and lower loads
- Rescue accident victims
- Remove obstructing trees and debris, and tear down walls
- Manipulate wrecked automobiles and trucks
- Easily and quickly solve scores of other accident and disaster problems with complete control of your pulling and lifting operations
- The Grip Hoist Rescue Kits are unique to the industry, made only by Tractel, and part of the ESI Equipment/JYD Industries Product Line

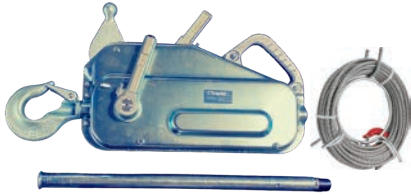


# How to choose a Griphoist that's right for you.

With accessories for various models, each rated at different weights requiring different load limits and abilities from their accessories, we understand the challenge of making sure your Griphoist components are safe, capable, and fit your needs. In line with the Junkyard Dog Industries mission, we made it simple for you to choose. Invest in an Individual Griphoist or a Griphoist Kit, choose an accessory kit specific to the capacity of your Griphoist, or get it all with a one-stop investment that covers all your Griphoist requirements, so you don't have to worry. Available Tractel TU Series Hoists: TU17, TU28, and TU32. [Visit us online for more information on all available Tractel Griphoists!](#)

## 1 INDIVIDUAL GRIPHOISTS®:

If you are looking for an Individual Griphoist, you found it.



TU17 2,000 lb. Griphoist with 60' Cable; 2000 lbs. = Rope 5:1 WLL  
**TTP-849202460K**

TU28 4,000 lb. Griphoist with 60' Cable; 4000 lbs. = Rope 5:1 WLL  
**TTP-849202460K**

TU32 8,000 lb. Griphoist with 60' Cable; 8000 lbs. = Rope 5:1 WLL  
**TTP-03219902460K**

## 2 GRIPHOIST® RESCUE KITS

If a Kit with basic components appropriate for the model Griphoist is right for you, look no further.



TU17 2,000 lb. Griphoist Rescue Kit with 60' Cable, Box, Snatch Block, 3 slings, and drive handle; 4000 lbs. = Rope 5:1 WLL  
**TTP-RESCUE-TU17**

TU28 4,000 lb. Griphoist Rescue Kit with 60' Cable, Box, Snatch Block, 3 slings, and drive handle; 4000 lbs. = Rope 5:1 WLL  
**TTP-RESCUE-TU28**

TU32 8,000 Pound Griphoist Rescue Kit with 60' Cable, Box, Snatch Block, 3 slings, and drive handle; 8000 lbs. = Rope 5:1 WLL  
**TTP-RESCUE-TU32**

## 3 GRIPHOIST® ACCESSORY KITS

Do you already have a Griphoist and just want to guarantee the accessories are rated for the capacity of your Griphoist? You're in the right place.



Includes (2) Anchor Shackle - specific to Grip Hoist, (2) 10' Round Sling, 2-Ply 3"X10' Base Recovery strap-tapered ends, 10' Grade 100 alloy chain Sling. Master Grab D-Ring to GBK Self Closing hook, Multi-Purpose Bag  
**ESI-GHK-17 / ESI-GHK-28 / ESI-GHK-32**

## 4 GRIPHOIST® RESCUE KIT & ACCESSORY ALL-IN-ONE PACKAGE

Are you looking for a one-stop investment that includes the Griphoist and all the appropriate components and accessories to operate it, all in one package? Look no further.



Griphoist Rescue Kit & Accessory Package for Model TU 17 includes Griphoist Rescue Kit w/ snatch block for 5/16" rope and Griphoist Accessory Kit for up to 2,000 lbs 5:1 WLL  
**ESI-GHRK-17**

Griphoist Rescue Kit & Accessory Package for Model TU 28 includes Griphoist Rescue Kit w/ snatch block for 7/16" rope and Griphoist Accessory Kit for up to 4,000 lbs 5:1 WLL  
**ESI-GHRK-28**

Griphoist Rescue Kit & Accessory Package for Model TU 32 includes Griphoist Rescue Kit w/ snatch block for 5/8" rope and Griphoist Accessory Kit for up to 8,000 lbs 5:1 WLL  
**ESI-GHRK-32**







# WINCH ACCESSORY KITS



**Offering class-leading accessories to bring you rapid accessibility to the equipment that matches the capacity of your winch so you don't have to worry.**

ESI Equipment's popular Winch Training Programs are available for departments and individual members! For more information please give us a call at 1-800-574-8228 or email us at [info@esiequipment.com](mailto:info@esiequipment.com)

**Offering class-leading accessories to bring you rapid accessibility to the equipment that matches the capacity of your winch so you don't have to worry.**

## RESCUE WINCH ACCESSORY KIT 8K-12K (ESI-20201-9-12)

**OPERATIONAL WITH:**  
8,000 – 12,000lb Winches  
5/16" – 3/8" Wire or Synthetic Rope

### INCLUDES:

- (3) 3 Ton Snatch Blocks with Latch
- (5) Anchor Shackles
- (2) 8' Round Slings
- (2) 10' Base Recovery Sling
- (1) 5' Grade 100 Adjustable Chain Sling
- (1) Wheeled Measuring Stick
- (2) Winch Line Dampening Bags
- (1) ESI Grab It Strap
- (2) JYD Industries Carry Bag

## RESCUE WINCH ACCESSORY KIT 15K-20K (ESI-20202-15-20)

**OPERATIONAL WITH:**  
• 15,000 – 20,000lb Winches  
• 3/8" – 1/2" Wire or Synthetic Rope

### INCLUDES:

- (3) 4T Snatch Blocks with Latch
- (5) Anchor Shackles
- (2) 8' Round Slings
- (2) 10' Base Recovery Sling
- (1) 5' Grade 100 Adjustable Chain Sling
- (1) Wheeled Measuring Stick
- (2) Winch Line Dampening Bags
- (1) ESI Grab It Strap
- (2) JYD Industries Carry Bag

## RESCUE WINCH ACCESSORY KIT 20+ (ESI-20203-20 Plus)

**OPERATIONAL WITH:**  
• 20,000lb or more Winches  
• 1/2" Wire or Synthetic Rope

### INCLUDES:

- (3) 4T Snatch Blocks with Latch
- (5) Anchor Shackles
- (2) 8' Round Slings
- (2) 10' Base Recovery Sling
- (1) 5' Grade 100 Adjustable Chain Sling
- (1) Wheeled Measuring Stick
- (2) Winch Line Dampening Bags
- (1) ESI Grab It Strap
- (2) JYD Industries Carry Bag

ACCESSORIES ARE TO BE USED AT A 4:1 SAFETY FACTOR. CONTACT ESI AT 267-803-1440 EXT. 104 WITH QUESTIONS OR TO SCHEDULE YOUR ESI WINCH TRAINING COURSE.

## DILLON DYNAMOMETER (DIL-10K-100))

**Tension Measurement Dynamometer**  
Provides accurate measurements for cabling and wire operations, while increasing safety



## WINCHING CHAIN KIT (ESI-WC-KIT-51020)

**Vehicle Harness and Rope Extender**

### INCLUDES:

- 5ft x 5/16" Grade 100 alloy chain Sling. Master Grab D-Ring to GBK Self Closing hook.
- (2) 10ft x 5/16" Grade 100 alloy chain Sling. Master Grab D-Ring to GBK Self Closing hook.
- 20ft x 5/16" Grade 100 alloy chain Sling. Master Grab D-Ring to GBK Self Closing hook.





# RESPONDER GEAR BAGS

Material Specifications and Features:

22 oz. Vinyl-Coated Polyester, UV Resistant, Won't Crack in Severe Cold, 100% Waterproof Fabric, Reinforced Wear Points



## Multi Purpose Bag

JYD-110



1

Our Multi-Purpose Bag from JYD's line of responder gear bags is perfectly sized to house any items measuring 22" (W) x 7" (H) x 9.5" (D). This Multi/All-Purpose Bag is mission-built with a tuff bottom that provides extra structural support to maintain its shape and offer protection from absorbing fluids found on rescue scenes. The bag includes a noncorrosive double zipper, reflective striping, carry handles, and a reinforced shoulder strap.

1

Designed to hold an SCBA cylinder and entire Ajax Air Chisel kit components and can be pre-connected ready for service. Three attached compartments hold a 60-min compressed air cylinder; regulator, air hose and spare bits, and an air gun with a bit connected to the hose. Hook and Barb enclosures with tabs secure 2 openings, and a long tab holds the gun in. A reinforced lid protects the regulator. An opening between the two compartments allows the regulator to stay attached to the cylinder. An adjustable 40" padded shoulder strap connected to metal D-rings and a handle for easy movement. (Air cylinder and air kit not included).

### Dimensions:

24" W x 13.5" H x 14" D

2

## Rotary Disc Saw Blade Bag

JYD-325



3

This bag is designed to hold up to 3 rotary saw blades in protective compartments made of heavy-duty vinyl-coated polyester. For on-the-go use, either metal, masonry, ordinary material, or the new super aggressive cutting blades can be carried safely and conveniently to the saw. A small exterior pouch is available to store a blade wrench. Full top overlapping lid with hook and barb closure keeps dirt and moisture out of the bag.

### Dimensions:

14.5"(w) x 15"(h) x 4"(d)

### Shoulder Strap:

26". Reinforced and padded

3

## Air Chisel Kit Bag

JYD-276



28

2



Our Hydraulic Hose Bags are designed to hold ground line sections of hydraulic rescue tool hose to keep them properly coiled and protect the couplings. The material does not absorb mineral oil hydraulic fluid, thus keeping the bag from attracting dirt. A hook & barb strap secures the large opening closed. Two carry handles provide easy maneuverability of hoses, while a handle at the bottom allows quick release of the hose line(s) from the bag.

**Dimensions:**

21" W x 22" H x 4" W

**Colors:**

Orange, Green, Black, Red, or Blue

4

**Troll Bag**  
Compliments the Hi-Rise Bags!

JYD-100



5

Carries supplies typical for hose evolutions: Hydrant adapters; hydrant wrench; other necessary hose or hydrant equipment. A flip lid with hook & barb enclosure allows full access to the bag interior. Inside is a hook & barb enclosed pouch for small equipment. A 57" adjustable shoulder strap secured with metal spring clips on exterior metal rings and an exterior hydrant wrench pouch is included.

**Dimensions:**

17.5" W x 10" H x 10.5" D

6

**Hydraulic Hose Bag**

JYD-075



4

The troll bag is made to carry additional equipment such as rubber mallets, blind caps, spare wheels, and nozzles - any spare components to aid in firefighters efforts to deploy or extend attack hose lines quickly in manual standpipe operations. Two double adjustable straps with plastic clips hold the bag and contents together. A reversible inner liner doubles as a cover. Reinforced shoulder strap with a hook & barb enclosed protective cover allows easy mobility. A reinforced bottom and partial sides for durability.

**Dimensions:**

19.5" W x 10.5" H x 7" D

5

**Back Step Bag**

JYD-275



6

For plastic or wood cribbing, this bag can hold up to (9) 4" x 4" pieces. This three-sided bag allows quick access to the cribbing pieces but keeps them secure during transport. Two double adjustable straps with plastic clips hold the bag and contents together. A handle at the bottom front for removal from the apparatus compartment. Two small openings in the bottom corners allow moisture run-off. Reinforced bottom for durability. See Kits on page 17.

**Dimensions:**

24" W x 11.5" H x 10" D

7

**LHD Wrench Pouch**

JYD-125



8

Designed to carry a Sidewinder with an interior pocket for the speed wrench, it's roomy enough to add a battery impact wrench and other accessories. The tough bottom provides extra structure to help maintain its shape and from absorbing fluids from the rescue scene. Includes a noncorrosive double zipper, reflective striping, carry handles, and a reinforced shoulder strap.

**Dimensions:**

22" W x 7" H x 9.5" D

9

**Cribbing Bag**

JYD-020



7

Designed to hold a hydrant wrench on the end of a large diameter hose. Three hook & barb connecting straps hold the pouch onto a 3", 4", or 5" hose section. A hook & barb enclosed lid secures the wrench inside. Reinforced bottom for durability.

**Dimensions:**

23.5" W x 7.5" H

8

**Sidewinder Carry Bag**

JYD-SW-B



9



An optional base accessory for Junkyard Dog Rescue Struts & Sidewinder Jack, the Cleat Base carrying bag is designed to hold 2 cleat bases and serves as a convenient and efficient way of transporting bases to a scene as well as storing them within your apparatus compartment for quick deployment.

See Cleatbase on page 15.

**Dimensions:**

21" W x 22" H x 4" W

10

**Doggie Bag (bag only)**  
See complete Doggie Bag on page 15  
JYD-475

11

Optional exterior storage bags for Junkyard Dog Rescue Struts, available in small and large, these bags are designed for protection of your rescue struts from environmental conditions. Made from 22 oz. Poly coated heavy duty Vinyl material, the bags are water resistance and equipped with a rubber sealed entry zipper for added protection. Storage bags also include reinforced sturdy insert on the bag for additional strength.

**Dimensions:**

17.5" W x 10" H x 10.5" D

12

**Cleat Base Bag**  
JYD-CLBB

10

Designed as an economical solution for responders to conveniently carry specifically selected components to assist during the stabilization process, The Doggie Bag is available with or with out its components. This bag is constructed of 18 and 22 ounces per square yard vinyl-coated polyester so the bag does not absorb fluids and is easily cleaned with mild soap and water with excellent UV resistance. The bag comes with with a fully enclosed lid, pockets for stabilization accessories, and an adjustable shoulder strap. Full Kit, Page 15

11

**Strut Exterior Storage Bags with Brackets**  
JYD-450-L or JYD-450-S

12

Designed for Rapid Intervention Teams to carry spare breathing apparatus to a downed firefighter/rescuer. Two attached compartments hold a 60-minute compressed air cylinder; A second stage regulator, 30' of air hose, and additional rapid intervention equipment to supply a trapped victim. Hook & barb enclosures with tabs secure the openings to each compartment. A reinforced opening between the 2 compartments permits the hose line to travel from the cylinder to the supply device. An adjustable 40.5" reinforced/padded shoulder strap has metal split-hook spring-loaded fasteners for easy release.

**Dimensions:**

24"(w) x 13.5"(h) x 14"(d)

13

**Crash Bag (bag only)**  
Complete Bag Crash Kits on page 29  
JYD-CB-1

14

Originally designed for foot entrapment by pedals, The Mini Puller Kit features a ½ Ton Come Along with a compact, lightweight carbon steel design and accompanying accessory chains. Featuring a short Handle for operating within tight spaces, the hoist is tested to 125% of Rated Capacity and meets ASME b30. Additional Details on the Mini Puller Kit can be found on page 15.

15

**R.I.T. Bag**  
JYD-020

13

The bag is made of heavy-duty waterproof vinyl with fully wrapped webbing handles. A three-sided-dual zipper allows for quick easy access to the contents. Bright orange color and a large reflective band to easily identify the bag. The inside contains a removable, magnetic tool board with pockets for individual tools. A semi-removable divider holds additional large tools. Also available complete with tools. More info on page 34.

**Dimensions:**

19" (w) x 15.5" (h) x 4" (d)

14

**Mini Puller Bag**  
Bag Only; see complete kit on page 15  
JYD-SW-B

15









# FIRST-IN ESSENTIALS



## Extrication Protection Cover Kit

JYD-EPC-K



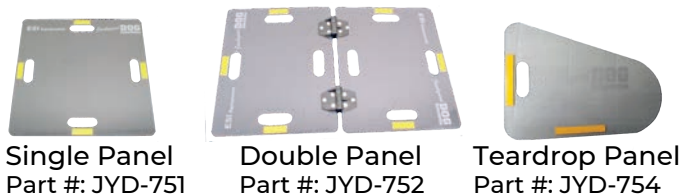
## Create a safer “Hot-Zone” space around an entrapped patient with the Extrication Protection Cover Kit.

Developed for the protection of EMS, Rescue workers, and patients, these products are intended to cover sharp areas where glass fragments or sharp metal ends exist either created by rescuers during the extrication process or because of the crash event. All components included in the Extrication Protection Cover Kit can be purchased individually:

- 3 Post Covers with Hook & Loop (Part: JYD-755)
- 1 24" x 24" Cover with 4 Interior Magnets for Extra Hold (Part: JYD-756)
- 1 24" x 60" Cover with 6 Interior Magnets (Part: JYD-757)
- 1 Carry Bag with Strap and Lid (Part: JYD-758)

Designed to provide protection to an entrapped victim inside a vehicle. The panels have hand-holds for gloved hands to maneuver easily. Clear .125" Poly Carbonate comes in single or double hinged panels. Each panel measure 21" x 24" with reflective tape protection.

- 1 Single Panel
- 1 Double Hinged Panel
- 1 Kovenex Rapid Response Blanket
- 1 weather-resistant carry bag with shoulder strap, pull straps, and enclosure



Single Panel  
Part #: JYD-751

Double Panel  
Part #: JYD-752

Teardrop Panel  
Part #: JYD-754

## Patient Protection Panel Kit

JYD-753



## Kovenex® Rapid Response Fire Blanket

KOV-RRBCB



The Kovenex® Rapid Response Blanket is a high-performance, flame and tear-resistant blanket used by extrication professionals and fire rescue teams. It will provide you and your rescue victims the needed protection against fire, intense heat and burn shattered glass particles, and sharp metal edges.

### Blanket Specifications:

- Fabric Weight: 10 oz./sq. yd.
- Blanket Size: 57" x 57"
- US Patent No. 6,102,128
- Tested to NFPA performance standards

Blanket with Bag	Blanket Only	Bag Only
Part #: KOV-RRBCB	Part #: KOV-RRBL	Part #: KOV-RRB





## CRASH BAG KITS

For a 1st Responder or Rescuer to utilize as a first-in tool at a vehicle crash. This contains the basic tools and equipment to start initial stabilization and quick entry for patient assessment. Made of heavy-duty waterproof vinyl with full wrapped webbing handles. A three-sided dual zipper allows for quick and easy access. Bright orange color and a large reflective band easily identify the bag. Inside contains a removable magnetic tool board with pockets for individual tools. A semi-removable divider holds additional large tools and secures the rescue blanket in place. Over 18 industrial quality tools in one convenient bag.

19" (L) x 15.5" (H) x 4" (W)

Weight: 13.5 lbs.



### Bag Only

JYD-CB



### Standard Crash Bag Kit

with Glas-Master

JYD-CB

- Channellock® 6 in 1 Screwdriver
- Channellock® Cable Cutters
- Channellock® 10" Adjustable Wrench
- Channellock® Pliers
- Ajax Strip and Peek Pry Tool
- Rescue Shears
- Spring-Ring Window Punch
- Lennox® 12" Hack Saw
- (4) Spare Lennox® Hack Saw Blades
- JYD Industries Seat Belt Cutter
- (4) Tire Valve Deflator/Inflators
- Glas-Master Saw with Center Punch
- Kovenex® Rapid Response Fire Blanket



### Elite Crash Bag Kit

with Glass Knife and 12v Drill Kit

JYD-CB-GK

- Channellock® 6 in 1 Screwdriver
- Channellock® Cable Cutters
- Channellock® 10" Adjustable Wrench
- Ajax Strip & Peek Pry Tool
- Rescue Shears
- Spring-Ring Window Punch
- Lennox® 12" Hack Saw
- (4) Spare Lennox® Hack Saw Blades
- JYD Industries Seat Belt Cutter
- (4) Tire Valve Deflator/Inflators
- Kovenex® Rapid Response Fire Blanket
- Glass Knife Head
- M12 Drill Kit—now brushless
  - (2) Lithium Ion Batteries,
  - AC Charger
  - DeWalt Pry Bar



### ElitePlus+ Crash Bag Kit

with Glass Knife and 18v Drill Kit

JYD-CB-GK-PLUS

- Channellock® 6 in 1 Screwdriver
- Channellock® Cable Cutters
- Channellock® 10" Adjustable Wrench
- Ajax Strip & Peek Pry Tool
- Rescue Shears
- Spring-Ring Window Punch
- Lennox® 12" Hack Saw
- (4) Spare Lennox® Hack Saw Blades
- JYD Industries Seat Belt Cutter
- (4) Tire Valve Deflator/Inflators
- Kovenex® Rapid Response Fire Blanket
- Glass Knife Head
- M18 Drill Kit
  - (2) Lithium Ion Batteries,
  - AC Charger
  - DeWalt Pry Bar









## X-POUCH KITS

### INSIDE POUCH:

Channellock® Adjustable Pliers  
 Channellock® Cable Cutters  
 Channellock® 6-in-1 Screwdriver  
 Ajax Strip & Peek Tool  
 Stanley® FatMax® Utility Knife w/ Spare Blades  
 SWAT-T™ Tourniquet  
 JYD™ Seatbelt Cutter

### BELOW COVER:

JYD™ Ringed Center Punch  
 EMT Trauma Shears  
 Streamlight ProPolymer HAZ-LO LED Flashlight

### OUTSIDE ZIPPER:

x2 Tire Deflator/Inflators

### OUTSIDE SLEEVE:

xSpring Ring Center Punch

### X-POUCH, with Components

JYD-XPOUCH-KIT

### X-POUCH, bag Only

JYD-XPOUCH-KIT



**ORANGE**



**RED**



**BLUE**



**BLACK**



**PLAIN BLACK**

**The JYD Industries X-Pouch secures tools comfortably at the rescuer's side, readily available for efficient and effective operations. With JYD's X-POUCH, you'll always be prepared. Available full or empty and comes in variety of colors.**

### SPECIFICATIONS:

The X-Pouch outer shell is built from 1000 Denier DuPont Cordura Nylon for years of rough dependable service. The interior pockets are built with 400 Denier Gray Packcloth for easy and quick deployment of tools, the lighter color material helps during use in low light conditions. Featuring 1" elastic on the sides and front of the pouch to help retain tools when the pouch is open or in odd positions. Velcro USA products are utilized to keep the pouch closed when stored, but quickly and easily pull open when tools are needed. A universal belt loop allows for normal carry or a quick pull of the "drop thigh" position allows the X-Pouch to be worn in the tactical mid-thigh position. A 1" leg strap is provided to keep the pouch secured to the user's leg. A zippered pocket on the flap allows the securing of small items. The X Pouch is constructed with 100% American-made materials and includes a Lifetime Warranty and is available with or without the tools.

Available Colors: Orange, Red, Blue, Black, Plain Black,  
 Leather Radio Straps Available! Sizes include: Standard, XL, XXL







# X-THE-BLEED TRAUMA KIT

**INTERVENE EFFECTIVELY WHEN  
YOU ENCOUNTER LIFE-  
THREATENING BLEEDING WITH  
JUNKYARD DOG INDUSTRIES**



## ABOUT

The X-the-Bleed Trauma Kit is a portable first aid bleeding control kit. It contains essential and proven medical equipment from SAMS Medical, a trusted industry name designed to limit blood loss in emergency and traumatic situations. The Components are all housed in the versatile and proven responder-designed X-Pouch Bag by Junkyard Dog Industries, which you can wear or carry however you prefer. The X-the-Bleed Trauma Kit eliminates obstacles and gives you a bleeding control kit to intervene effectively and efficiently.



## KIT INCLUDES:

- x2 SAM Medical XT Extremity Tourniquet
- Chito SAM100 Chitosan Hemostatic dressing
- Compressed Gauze
- LED Hand Light
- Medical Sheers
- Medical Gloves
- Permanent Marker
- Emergency Bandage
- Instruction Card
- X-Pouch



# A/B TRAUMA KIT

**HAVE ALL THE INITIAL EQUIPMENT  
YOU NEED FOR LIFE-THREATING  
BREATHING OR BLEEDING  
EMERGENCY ON YOU.**



## ABOUT

The A/B Trauma Kit is a portable first aid breathing and bleeding control kit. It contains essential and proven medical equipment from SAMS Medical, a trusted industry name designed to limit blood loss in emergency and traumatic situations. The Components are all housed in the versatile and proven responder-designed X-Pouch Bag by Junkyard Dog Industries, which you can wear or carry however you prefer. The A/B Trauma Kit convenient for working events or everyday preparedness.

## KIT INCLUDES:

- Chito SAM100 Chitosan Hemostatic dressing
- Compressed Gauze
- LED Hand Light
- Medical Sheers
- Medical Gloves
- Permanent Marker
- Dynarex Resp-o2 Nasopharyngeal
- I-gel Supraglottic Airway
- Blue X-Pouch





**RUPTURE  
SEAL™**  
Stops a leak dry



## DESIGNED TO STOP FUEL AND CHEMICAL LEAKS IN SECONDS

### FASTEST DEPLOYMENT SPEED

Rupture Seal can be deployed in less than 20 seconds. Far faster (and cleaner) than competing products like wooden bungs or screw plugs. In the event of a leak or spill, response time is crucial to reduce environmental impact and cost of cleanup.

### HIGHEST PERFORMANCE

When factoring in time of deployment, chemical and fuel compatibility and versatility when it comes to fast on-site solutions requiring little to no training. Rupture Seal clearly is the best in class for plugging leaks.

### LOWEST REMOVAL COST

Often overlooked, after a spill is cleaned up the site of the leak needs to be cleaned up and addressed. Rupture Seal simply needs to be cut away and discarded. Competing products such as urethane objects and puddles need to be chiseled away and others require tools (and valuable time) to recover.



**MAKE IT PART OF YOUR SPILL RESPONSE EQUIPMENT**

Enhance your safety, mitigate your environmental impact, and reduce your liability costs by being prepared when the next spill happens. Visit us online at [www.ESlequipment.com](http://www.ESlequipment.com) to see all Rupture Seal Products.





## GLASS KNIFE KITS

JYD Industries' wildly popular Glass Knife, with its' robust design, hardened steel replacement blades, and the flexibility to use with any drill, has proven itself a valuable tool for responders. For today's 1st responders, the addition of laminated glass in newer model vehicles poses a serious challenge. This is a huge factor in why JYD Industries strives to equip you with products and solutions to prepare you for the future of new-car technology and glass management, like The Glass Knife.

**The laminated glass cutter that fits any drill.**



**Glass Knife Head**  
JYD-GK-GLASSKNIFE



**Glass Knife Kit #1**  
JYD-GK-KIT

- Glass Knife Head
- Pry Bar
- x5 N95 Dust Masks
- Safety Glasses
- Can of Wetting Agent
- Carry Bag



**Glass Knife Kit #2**  
JYD-GK-KIT-2

- Glass Knife Head
- Pry Bar
- x5 N95 Dust Masks
- Safety Glasses
- Can of Wetting Agent
- Carry Bag
- M12 Fuel Brushless Hex Driver kit (Includes Driver, 2 Batteries and Charger)



**Glass Knife Kit #3**  
JYD-GK-KIT-33

- Glass Knife Head
- Pry Bar
- x5 N95 Dust Masks
- Safety Glasses
- Can of Wetting Agent
- Carry Bag
- M18™ Drill
- x2 Lithium Ion Batteries
- AC Charger

### The Value

The glass knife and a drill work independently for use in any position. The flexibility to use the Glass knife with any drill and simplicity of attachment makes it a valuable and economical tool for responders.

### Reduced Risks

By design, 80% of debris is ejected outside the vehicle compared to a reciprocating saw. This greatly reduces the risk for the patient and the rescuer.

### Unique Swiveling Capabilities

The Glass Knife will maintain a comfortable position for the operator while allowing for easy maneuvering to perform tight-corner cuts with constant control and little effort. We found the ability to articulate the drill and the head priceless when maneuvering around corners, bent steel, or A-Posts.

### Hardened Steel Blades

Effective and durable, the Glass Knife blade's smooth cutting edge made of hardened, ground, and polished steel have an Interference fit – this means the dust and chips do not fall between the blades and the blades don't wear out.



## PACKEXE SHARPSWRAP

Packexe® Sharpswrap® is a sharps management tool. This is an easy-to-use product to cover up sharp edges and protect PPE from damage and responders and patients from injury.



### Sharpswrap® Kit

ESI-PX-SWK

**x4 Sharpswrap® Rolls (4" x 100')**

ESI-PX-SWR

**x1 Sharpswrap® Handle**

ESI-PX-SWH



## PACKEXE SMASH

Packexe® SMASH is our original Time-Critical Glass management tool. For use in extrication on all types of glass. Packexe® SMASH holds the glass in place, reducing the risk of injury from glass fragments and dust.



### Packexe Smash® Kit:

ESI-PX-SK

**SMASH Dispenser**

**SMASH Perforated Roll 12.25"x164' (fits handle)**

**SMASH Unperforated Roll 12.25"x164' (Hand application)**

**Film Cutter, Safety Knife, Squeegee, Cloth, Bag**

### Packexe Smash Hand Roll®

ESI-PX-HR

### Packexe The Edge®

ESI-PX-SED





# SAFETY KIT

JYD-SAFE-K1



## FOUR KITS COMBINED INTO ONE FOR EASIER OPERATION AND DEPLOYMENT

Everything you need for patient and rescuer protection is conveniently packed into one vinyl-coated polyester bag. Bright orange and striped with reflected tape for high visibility at crash scenes. Multiple pockets placed within and around the outside of the bag allow for easy access to the tools you need.



### Packexe® SMASH Kit

ESI-PX-SM

- Dispenser
- SMASH Roll, 12.25" x 164', Perforated Every 4" (Fits Dispenser)
- SMASH Roll, 12.25" x 164', Unperforated (Hand Application)
- Film Cutter
- Safety Knife
- Squeegee
- Micro Fiber Cloth



### Patient Protection Panel Kit

JYD-753

- Single Panel
- Teardrop Panel
- Kovenex® Blanket
- Carry Bag



### Packexe® Sharpswrap Kit

ESI-PX-SW

- x4 Sharpswarp refill Rolls
- Sharpswarp Handle



### Extrication Protection Cover Kit

JYD-EPC-K

- x3 Post Covers with Hook & Loop
- 24" x 24" Cover with 4 Interior Magnets for Extra Hold
- 24" x 60" Cover with 6 Interior Magnets



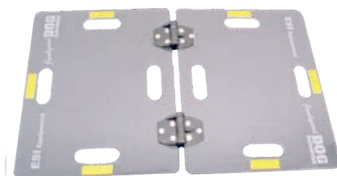
### Spring Ring Window Punch

JYD-20102

### Carry Bag (pictured above)

JYD-076

## ADDITIONAL OPTION!



Replace the single panel for a double-hinged panel with Safety Kit #2 (JYD-SAFE-K2)



# HAND TOOLS



Junkyard Dog Industries, a division of ESI Equipment, has designed 4 Milwaukee Cordless Power Tool Kits with intentionally selected components to assist you in extrication operations and work seamlessly with Junkyard Dog Industries stabilization equipment. Here's how:

**MILWAUKEE KIT#1** *Impact Wrench to raise and lower the Sidewinder Jack*

**MILWAUKEE KIT#2** *Added drill bits to create purchase points for the struts when necessary*

**MILWAUKEE KIT#3** *Just drill driver and Sawzaw, incase you need it!*

**MILWAUKEE KIT#4** *Offers you the same operations from Kit 1, plus a Reciprocating Saw for gaining access*

**KIT 1**



- M18™ 1/2" Impact Wrench
- M18™ Lithium Ion Battery
- 110V Charger

**KIT 2**



- M18™ Drill Driver
- M18™ 1/2" Impact Wrench
- 2 M18™ Lithium Ion Battery
- 1/4"- 3/4" Step Drill Bit
- 110V Charger
- Tool Bag

**KIT 3**



- M18™ Drill Driver
- M18™ Sawzall®
- (2) M18™ Lithium Ion Batteries
- 110V Charger
- (2) 6" 10TPI Recip Saw Blades
- (2) 9" 10TPI Recip Saw Blade
- Recip Saw Blade Holder
- 1/4"-3/4" Step Drill Bit
- Tool Bag

**KIT 4**



- M18™ Drill Driver
- M18™ 1/2" Impact Wrench
- M18™ Sawzall®
- (3) M18™ Lithium Ion Batteries
- 110V Charger
- 1/4"- 3/4" Step Drill Bit
- Recip Saw Blade Holder
- (2) 6" 10TPI Recip Saw Blades
- (2) 9" 10TPI Recip Saw Blades
- Tool Bag

## OTHER MILWAUKEE



**M18™ Cordless 1/2" Compact Impact Wrench with Pin Detent**  
2XC High Capacity Lithium Ion Battery pack, 1-Hour Charger, Carrying Case

Part #: MIL-2659-22



**M18™ Cordless Compact Drill Driver**  
Includes: 18V Lithium Ion Battery Pack, 18V Lithium Ion Charger, 1/3" 3-Jaw Keyless Chuck

Part #: MIL-2704-22



**Sawzall® M18™ Cordless Recip Saw Tool Kit**  
Sawzall® M18™ Cordless Recip Saw, 18V XC High Capacity Lithium Ion Battery, 1-Hour Charger, General Purpose Sawzall® Blade, Carrying Case

Part #: MIL-2621-21



**9 Piece Sawzall® Blade Set**  
Includes: (2) 6" 5 TPI SAWZALL® Blade, 9" 5 TPI SAWZALL® Blade, (3) 6" 14 TPI Thin Kerf SAWZALL® Blades, (3) 6" 24 TPI Thin Kerf SAWZALL® Blades

Part #: MIL-49-22-1145



## Recip Saw Blade Holder

Designed to carry additional blades. Attaches to any reciprocating saw with hook and loop fasteners. Holds (2) 6" & (2) 9" Reciprocating Blades



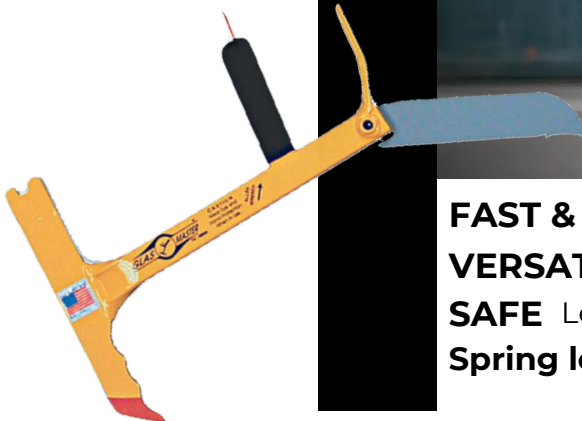
**MAKE YOUR SPARE RECIPROCATING SAW BLADES EASILY ACCESSIBLY SAW**

**Yellow Glas-Master**  
WEH-GMM-1-Y

**Orange Glas-Master**  
WEH-GMM-1-O

**Window Punch Replacement**  
WEH-GMM-1WP

**Standard Replacement Blade**  
WEH-GMM-1B46



**Glas-Master Saw**



**FAST & EFFECTIVE** Cuts rescue time significantly

**VERSATILE** Use on fiber-glass, wood, plaster, etc.

**SAFE** Less danger to entrapped victims and user

**Spring loaded center punch included**



# JYD Industries™ Life-Saver Recognition Award

## We Want to Recognize You.

JYD Industries has created a program to recognize lifesaving efforts performed by our customers while utilizing JYD Struts and Sidewinders during an extrication. The crew or team in actual contact with the equipment at the rescue scene will be acknowledged with the Life-Saver Award .

If selected, all personnel involved will receive a certificate of recognition and a JYD Life-Saver pin. Additionally, a Life-Saver decal will be sent to place on the apparatus acknowledging the lifesaving effort. Awardees and a description of the event will also be featured on the JYD website.

Visit us online to learn more



To submit a request for recognition, send to:

JYD Industries  
c/o Vicky Azzara  
119 Keystone Drive  
Montgomeryville, PA 18936  
or email: [info@jydind.com](mailto:info@jydind.com)



A Division of ESI Equipment, Inc.

119 Keystone Drive  
Montgomeryville, Pa 18936  
1-800-574-8228

[info@JYDind.com](mailto:info@JYDind.com) / [info@esiequipment.com](mailto:info@esiequipment.com)  
[www.JYDind.com](http://www.JYDind.com) or [www.ESlequipment.com](http://www.ESlequipment.com)

