

Transferable, Mission-built, Response Vehicle.



Magnolia Light Rescue



ESI APPARATUS DIVISION

ESI has always offered our customer base the ability to design, fabricate and install well thought-out hydraulic rescue systems. Today, we offer complete fire apparatus installation of all equipment (at your location or ours). Our ESI Rapid Response Units offer an advanced economical solution to today's high vehicle operating costs. With transferable bodies that fit any domestic heavy duty pick-up, custom interior configurations upfitted with remarkable capability, and a uniquely engineered wiring harness housing all components mounted inside the cap, these units offer a rare opportunity to reduce operating costs and enhance your capabilities.

OUR MISSION

To supply, support, and educate the emergency response community with innovative equipment and the latest knowledge and information to continue to enhance, simplify, and elevate your life-saving efforts. ESI Equipment, Inc. is made up of multiple divisions to serve as a proven and reliable industry resource for 30+ years.

ESI Apparatus Division

119 Keystone Drive, Montgomeryville, PA 18936

Phone: 267-803-1440 / Toll Free: 1-800-574-8228

Fax: 267-803-1447

Email: info@esiequipment.com

www.ESIapparatus.com



Iron Ridge

Economical Advantage.

Departments typically engage with us when they are struggling to find a highly effective, cost-efficient way to respond to calls while dealing with less manpower and smaller budgets. Smaller rescue vehicles are filling the need for many departments where a larger truck is above budget restraints and staffing requirements. Less expensive to operate and capable of carrying everything needed for everchanging responder needs, Rapid Response Unit decreases the number of crew members required and leaves the larger, more expensive truck for a call that requires its use, extending the life of your larger trucks with less wear and tear. The fast and easy transfer of the insert allows the vehicle to be back in service quickly. These units serve as a more economical and efficient response to motor vehicle crashes with lower cost of ownership, better response times, and increased fleet versatility.



Albert Lea QRS



ESI RAPID RESPONSE UNITS



Lycoming County Forensic Services

WHY CHOOSE ESI EQUIPMENT?

Innovation and dedication have made ESI Equipment one of the largest full-service dealers in North America, handling dozens of different equipment lines. ESI was started by first responders that understand today's challenges in Fire, EMS, Rescue, Law Enforcement, and other response entities. From our experienced Instructors, our Trained and Certified Service Technicians, to our passionate Sales Representatives, ESI is proud to be the choice of thousands of departments dedicated to serving their communities.



Reduce your Operating Costs without Reducing your Capabilities

Utilizing state-of-art equipment with purpose-built configurations, ESI Rapid Response Units provides users lower cost of ownership and better response times while increasing the versatility of their fleet.



Canton Fire Service EMS Special Operations

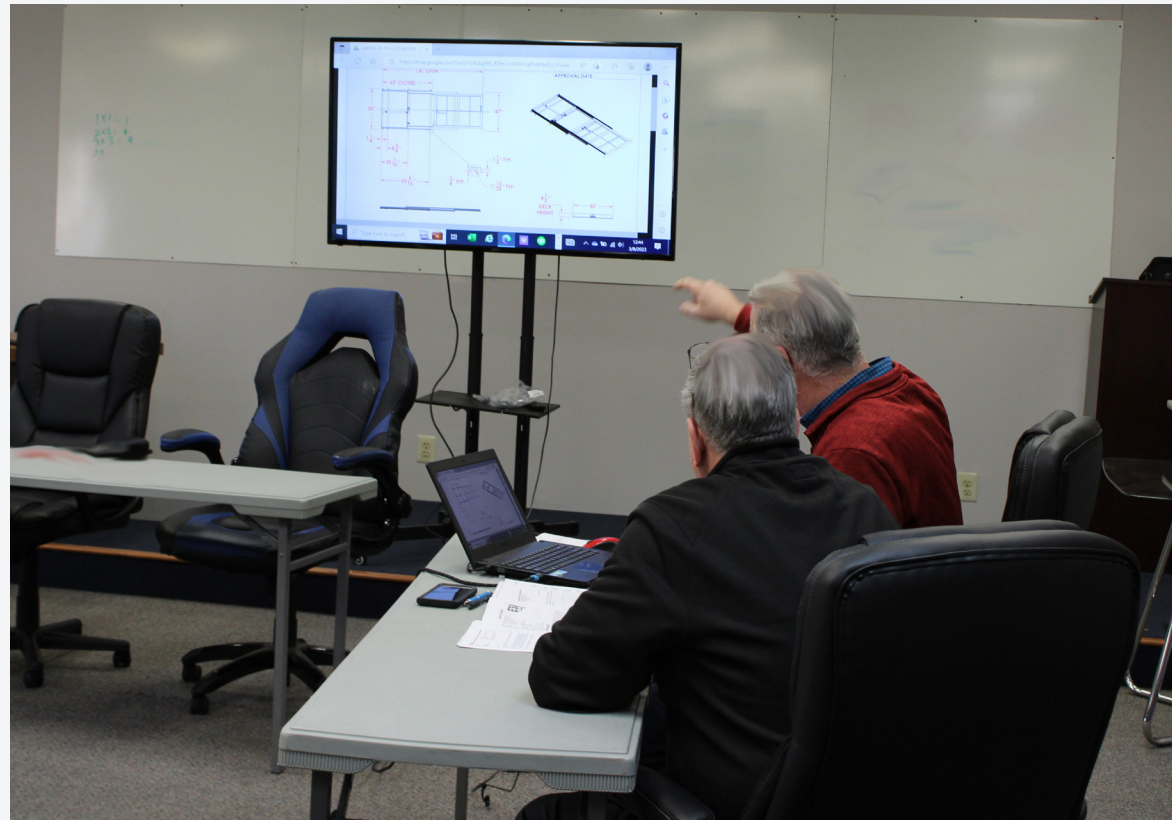
Why ESI Rapid Response Units?

- All fiberglass weather-resistant body insert, carbon fiber reinforced.
- Fits any domestic heavy-duty series pick-up truck with a bed size of 6.5' or 8'.
- Completely transferable body inserts using patented four corner actuated tie-down, allows quick insertion or removal. Transferrable between makes of vehicles (FORD, CHEVROLET, RAM ETC.).
- Doors have anodized and coated hardware, reinforced contour frame with integrated rain gutter.
- 60/40 Split rear doors with storage pockets.
- Full 180° rear opening for better access.

Mission - Built.

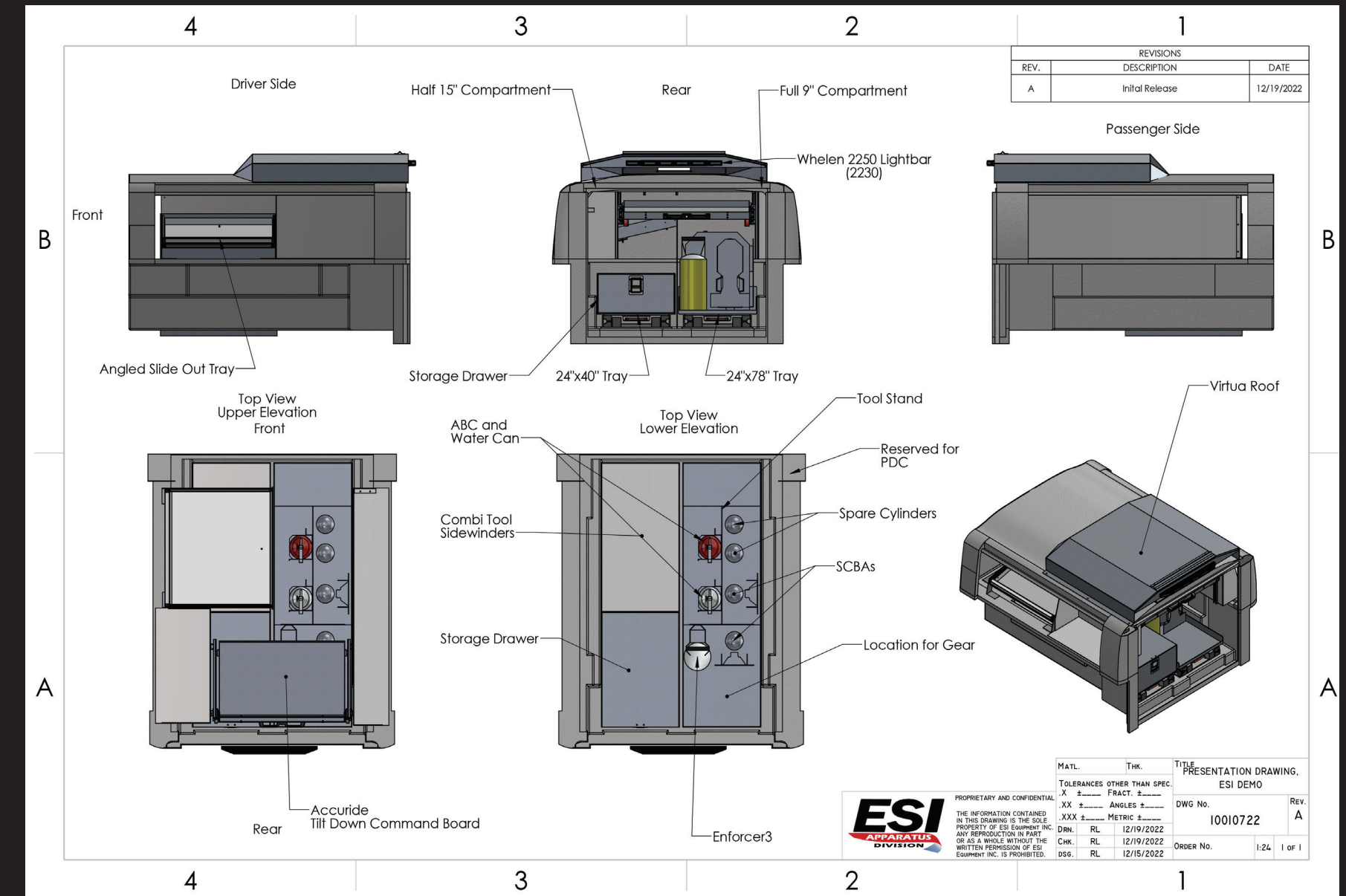
ESI Apparatus Division works closely with our customers to design mission built features. During our design phase we create first-class 3-D CAD drawings that make the build come to life. We have access to vehicle drawings from the manufactures and can show organized layouts of the side cabinets and rear trays or drawers.

ESI designs, fabricates, and installs equipment and accessories to maximize performance and deployment through well thought out and proven, mission-built features and detail-oriented compartments for everchanging responder needs, arming you with everything needed for immediate rescue and assist capabilities. With a reinforced roof to accommodate such features as light towers, drone launch pads, along with internal structural additions specific to your needs, these units upfitted with custom, mission-specific compartments will maximize response and deployment needs. Increase your efficiency and be readily deployable with affordable, reliable, and mission-built response vehicles.



Remote meetings make it convenient to view drawings and discuss specific mission-specific details when you can't be in person.

ESI design team can help you create a unit with custom features and detail-oriented compartments mission-specific for your needs.



Fire Services

Trappe Fire Department



Designed for traffic control at incidents large and small. This unit features dual rear pull out trays for cones and signs. Traffic advisor on front and rear of roof. Side cabinets for storage of traffic vests, flashlights and additional equipment.



EMS Special Operations

Mountainside Rescue Squad



This special operations unit was designed primarily for rehab, with storage for a 10X10 pop-up tent and other necessary equipment. It also has a side command board and radios for incident command. As needed this unit can also be used as a medic unit and equipped with a full set of first in medical gear.

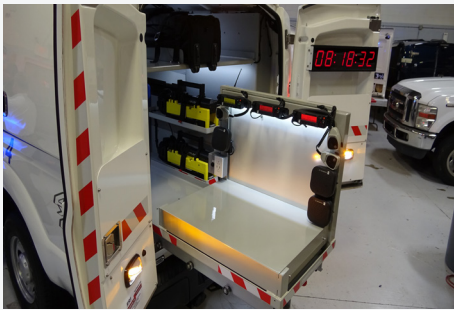


Tactical Communications

Montgomery County, PA



Built for a county emergency communications department. Their unit has an incident command center, and multiple portable radios charging stations. These are charged through shoreline and while operating a small drone. Also equipped with 10X10 pop-up tent and a virtual protective slide out roof.



Multi-use / Light Rescue

Magnolia Rescue Columbia Co.



The ultimate “multi-use” unit. Their RRU has two rear slide-out trays equipped with a set of Holmatro hydraulic rescue tools, an Enforcer 10 CAFS System, SCBA and spare bottles. Side compartments have a full set of hand tools and medical gear for QRS. This unit handles QRS, RIT calls, mutual aid and light rescue.



Side Cabinets

Side Baseline Options:

Half length 9” deep cabinet with angled slide out tray to help organize all the equipment.

Canton Fire Department EMS



Wake County Paramedic Chief Response Vehicle



Angled slide-out tray capable of carrying, 300 lbs of equipment and a half length 15” deep compartments with 110, 12V dual USB outlets for charging equipment.

Side compartments, Smooth Aluminum:

- Full and half width
- 9”, 15” 23” or custom depth

Side Slide-out Tray Styles:

- Angled or straight with retractable locking slides.
- Double stacked trays available for (RRU 654 & RIU 854 only)

Additional Options:

- Side compartments – made of smooth aluminum. Can be 9”, 15’, 23” or custom depth. Add any suggested storage items.
- Angled slide-out trays capable of carrying up to 300 lbs.
- Flip up dry erase command board.
- Radio communication system.
- Rear heated and air conditioned for storage of environment sensitive items.
- Dual rear pull-out trays. customized with adjustable dividers.

Response Solution.



East Williston Multi-use

A responder vehicle solution with capabilities that overcomes the refinements faced today - reduced workforce and budgets, aging apparatus, and increased calls. Capable of housing your mission-specific equipment to maximize performance and deployment efficiency needs, whatever they may be. Armed with everything needed for immediate rescue/assist capabilities all located inside.

ESI design team can help you create a unit with custom features and detail-oriented compartments mission-specific for your needs.

Let us design and build your Rapid Response Unit



FLEET VERSATILITY.



Undisclosed Customer

Rear Baseline Options:

- Rear Floor Tray Styles:
- Full, half, 60% width for 6.5’ or 8’ body.
 - 100% pull-out, 2000 lbs. capacity (Power tray available).
- Storage chutes for tents, traffic cones, etc.
 - Rear facing equipment cabinets for tools, power unit, hoses, medical gear, etc.
 - Rear vertical slide-out wall.
 - Backboard storage sleeve holds 1 or 2 backboards.
 - Incident Command Console: fixed or pivoting.
 - Standard Emergency Lighting Packages Available.
 - Automated Slides.
 - Slam Latch Lock.
 - Sophisticated Roof Actuator.
 - LED Enhanced Rear Back-up Cam System.

Custom equipment mounts and designs are available.



Montgomery County, Pa Tactical Communications

ESI Rapid Response Units are purpose-built to reduce your operating costs while increasing the versatility of your fleet. Fully enclosed to ensure maximum protection from the elements, made with lightweight fiberglass to maximize fuel efficiency, and maximized specifically for your performance and deployment needs, however specialized they may be. With endless detail-oriented custom equipment compartments and available cutting-edge automation, ESI Rapid Response Units are capable of housing your mission specific equipment all inside a weather-resistant, time tested, transferable cap that fits on any 6ft or 8ft pick-up truck bed. Once you’re finished with the pickup truck, the user can slide the RRU body off and transfer it to another truck or reuse the untouched pickup bed for utility purposes, making ESI Rapid Response Units fit almost anywhere in a fleet.

Truck Upfitting

Heating & Cooling System

Heating and cooling system available for storage area. It can run off engine, shorline or both.

Refrigerator/freezer units also available.



Mountainside Rescue Squad

LED Enhanced Rear Back-Up CAM System

Provide your department with the clearest reverse cam display. Protect your drivers, pedestrians and other vehicle owners by preventing a potential accident. Benefits to you are increased driver productivity, morale and confidence.



Back Seat Storage

We can customize storage in the rear seat area to fit customer's mission. You can custom fabricate shelves or even upfit for a K-9 unit.



Albert Lea QRS

Lighting

Standard Emergency Lighting Packages:

- Federal Signal Rapid Response Body and Cab LED System with platinum smart siren.
- Whelen Lighting Body and Cab System with Cencom Core.
- SoundOff Signal Body and Cab System with Blueprint 3 Control System.
- Mini Bar for Front Winch or Rear Upper Body.
- Power Call Siren.
- Rear LED Inner Door Flashers and Flood Lights.
- Side Compartment Door LED Flashers.
- Various scene lighting options available.



Hackensack Mobile Intensive Care Unit

Truck Upfitting

Storage Drawers, Cabinets, and Slides

Rear floor full or half custom drawers, cabinets, and rear slides help to organize equipment to fit your needs.



Sterling Volunteer
Rescue Squad



Montgomery County Mobile
Vaccination Unit

1-800-574-8228

Virtua Roof

Power slide out roof extension for protections from the elements at extended incidents.
Retracts automatically when rear doors close.



Undisclosed customer

Sentinel System

The Sentinel system delivers a cleaner cab by actively reducing harmful contaminants in Emergency Vehicles. Its patented Needlepoint Bipolar Ionization (NPBI™) technology uses a precise electronic charge to generate ions that neutralize VOCs, viruses, bacteria, and even sterilize mold. And it is safe for humans and even pets while in operation as it produces! No Ozone or harmful byproducts, thereby allowing units to remain in service longer.



Once installed, the Sentinel unit constantly delivers NPBI generated ions, actively neutralizing VOC's actively deactivating pathogens, and actively agglomerating fine particulate matter including smoke.

www.esiappartaus.com

Transferable.

ESI Rapid Response body-inserts fit any domestic heavy-duty pick-up truck bed (6.5' or 8') including Ford, Chevrolet/GMC, and Ram, AND are completely transferable. Our unique Shim Kits allow you to transfer your RRU body between truck manufactures (from Dodge to Ford, etc.), taking transferability to a whole other level. The expected lifespan of the RRU body is 15 to 25 years, exceeding the life of 2, sometimes 3 pickup trucks. Once you're finished with the pickup truck, the user can slide the RRU body off and transfer it to another truck OR reuse the untouched pickup bed for utility purposes... Making ESI Rapid Response Units fit almost anywhere in a fleet.

Community Fire & Rescue



Universal fit for 6 and 8 foot pick-up boxes
Transferable to different manufacturer
Lightweight construction
Over 15 years of lifespan
Cap can be painted or wrapped

Evident in every detail, ESI Apparatus Division's Rapid Response Vehicles are the bridge to the future of **AFFORDABLE, RELIABLE, ADVANCED** apparatus that can respond to almost any event and save lives.



Iron Ridge Fire Department QRS Unit



119 Keystone Drive Montgomeryville, Pa 18936

Toll Free 1-800-574-8228 Office 267-803-1440

Info@ESIEQUIPMENT.COM

www.ESIAPPRATUS.COM

